

# PWRTec

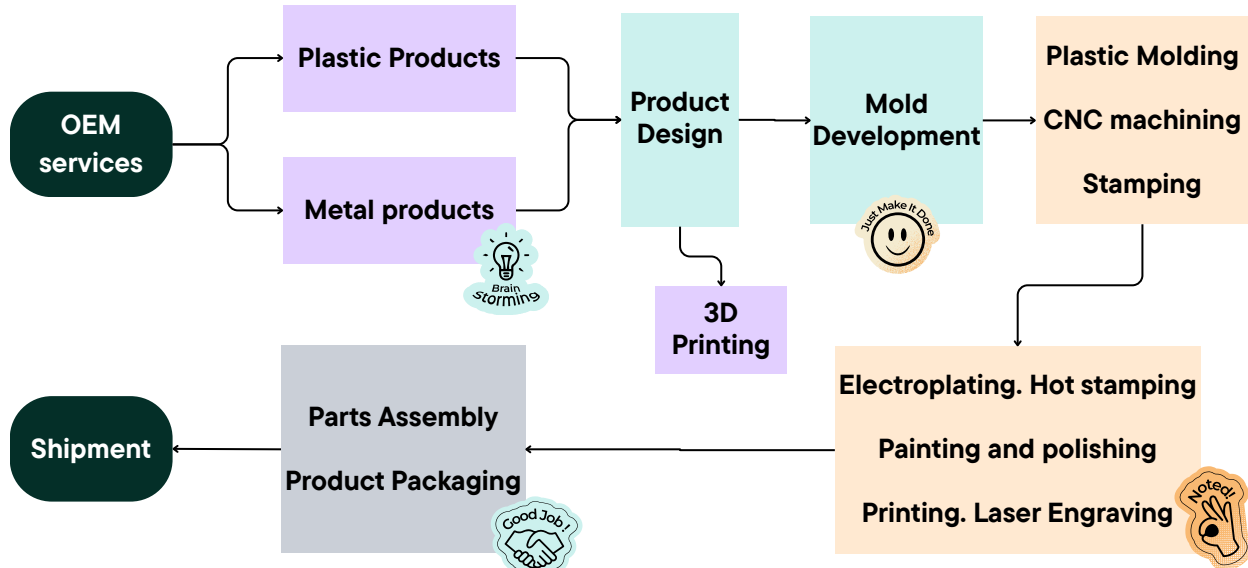


Product OEM x Integrated Manufacturing

One-stop OEM service to meet customers' diverse needs

## Integrated Manufacturing

## Service Flow+



## Technical Core Integrated Manufacturing

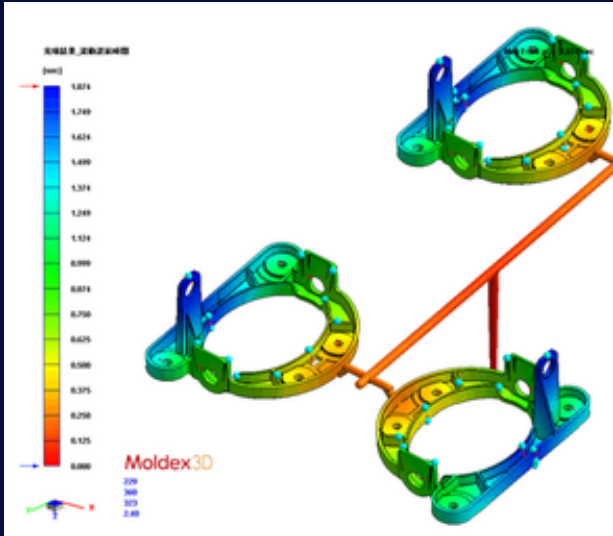
## Main Application Areas

- ✓ Auto industry
- ✓ Medical industry
- ✓ Electron Optics
- ✓ Diverse customized products

## Feature

We're more than just a manufacturer; we're a strategic partner to leading brands across various industries. Leveraging IATF 16949 automotive-grade quality certification, we implement a "zero-defect" manufacturing philosophy in every project, successfully serving industries with stringent requirements for precision and reliability.





## Front-end Engineering Mold development

### Feature

- ✓ 3D Mold Flow Analysis
- ✓ CNC / EDM Metal Processing
- ✓ 3D printed prototypes
- ✓ Design for Manufacturability (DFM)

## Precision Injection Molding

### Feature

- ✓ Machine Specifications: 80 ~ 360 tons
- ✓ Production Capacity: Maximum 700mm / 650g
- ✓ General-purpose/Engineering plastics (ABS, PC, POM, Nylon...)
- ✓ Special material application (glass fiber reinforcement, fire resistance grade)

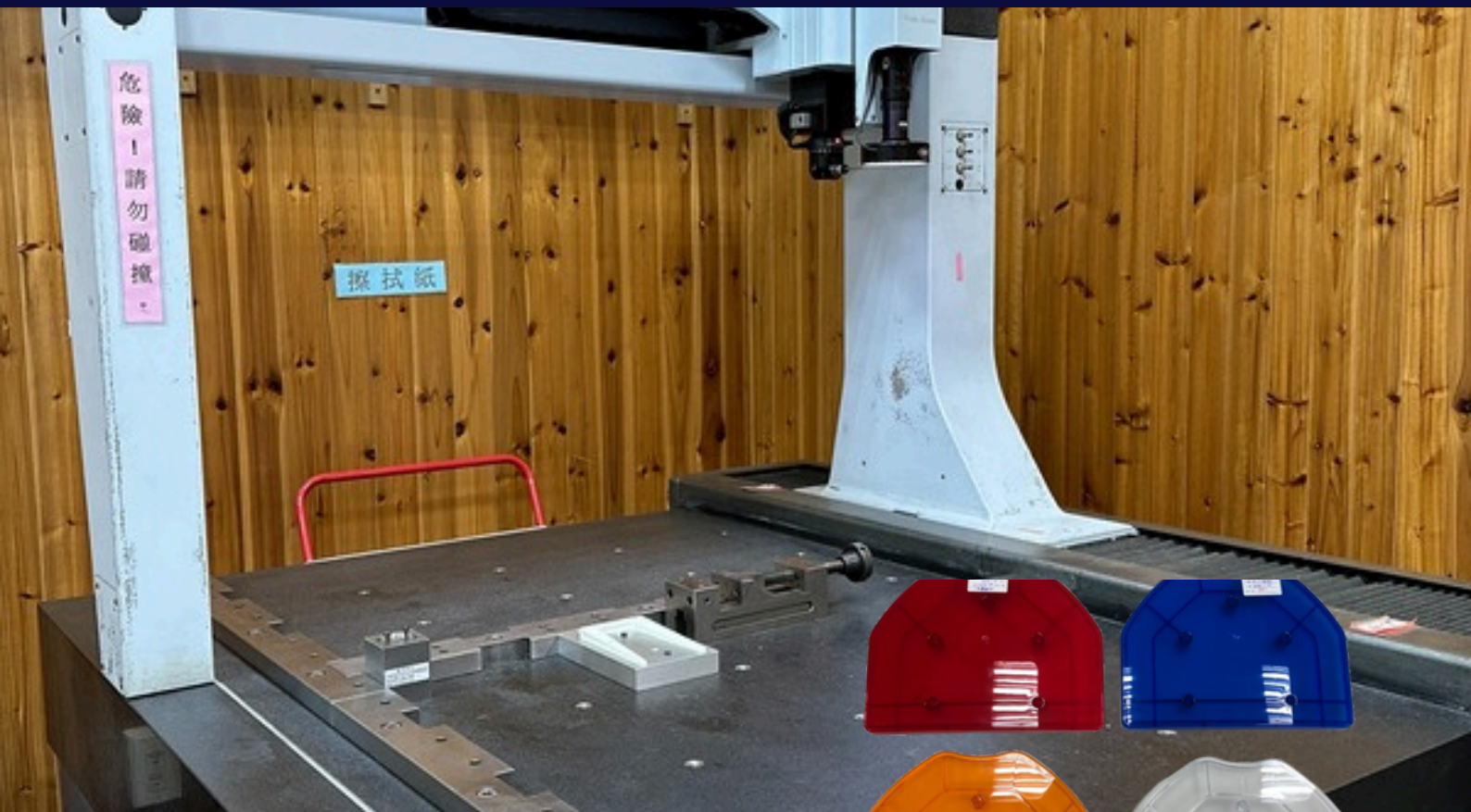


## One-stop Integrated post-production

### Feature

- ✓ Ultrasonic Fusion
- ✓ Spraying / Electroplating / PVD
- ✓ Screen / Pad Printing / Laser Engraving
- ✓ Finished product assembly and packaging





Quality

## Unchanging Promise

We strictly adhere to the IATF 16949 automotive quality management system, establishing a comprehensive quality control process from incoming materials (IQC), in-process (IPQC), to finished product (FQC). Using precision equipment such as 3D measuring machines and image measuring instruments, we ensure that every product we deliver meets the most stringent standards.

### Feature



Auto industry



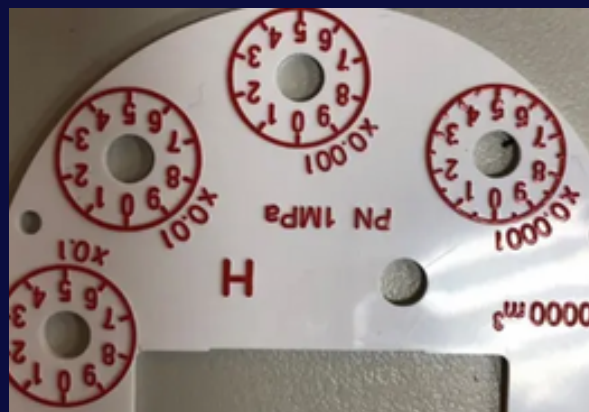
Medical industry

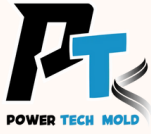


Electron Optics



Multiple Applications





寶泰精工，匠心獨具

Professional | High-Quality | Crafted



# Contact Us

- ☎ +886-6-3841012
- ✉ [lion.su@mold.asia](mailto:lion.su@mold.asia)
- 🌐 [www.ptmoldtw.com](http://www.ptmoldtw.com)
- 🌐 No. 57, Gongye 2nd Rd., Annan Dist.,  
Tainan City 709015, Taiwan (R.O.C.)

